

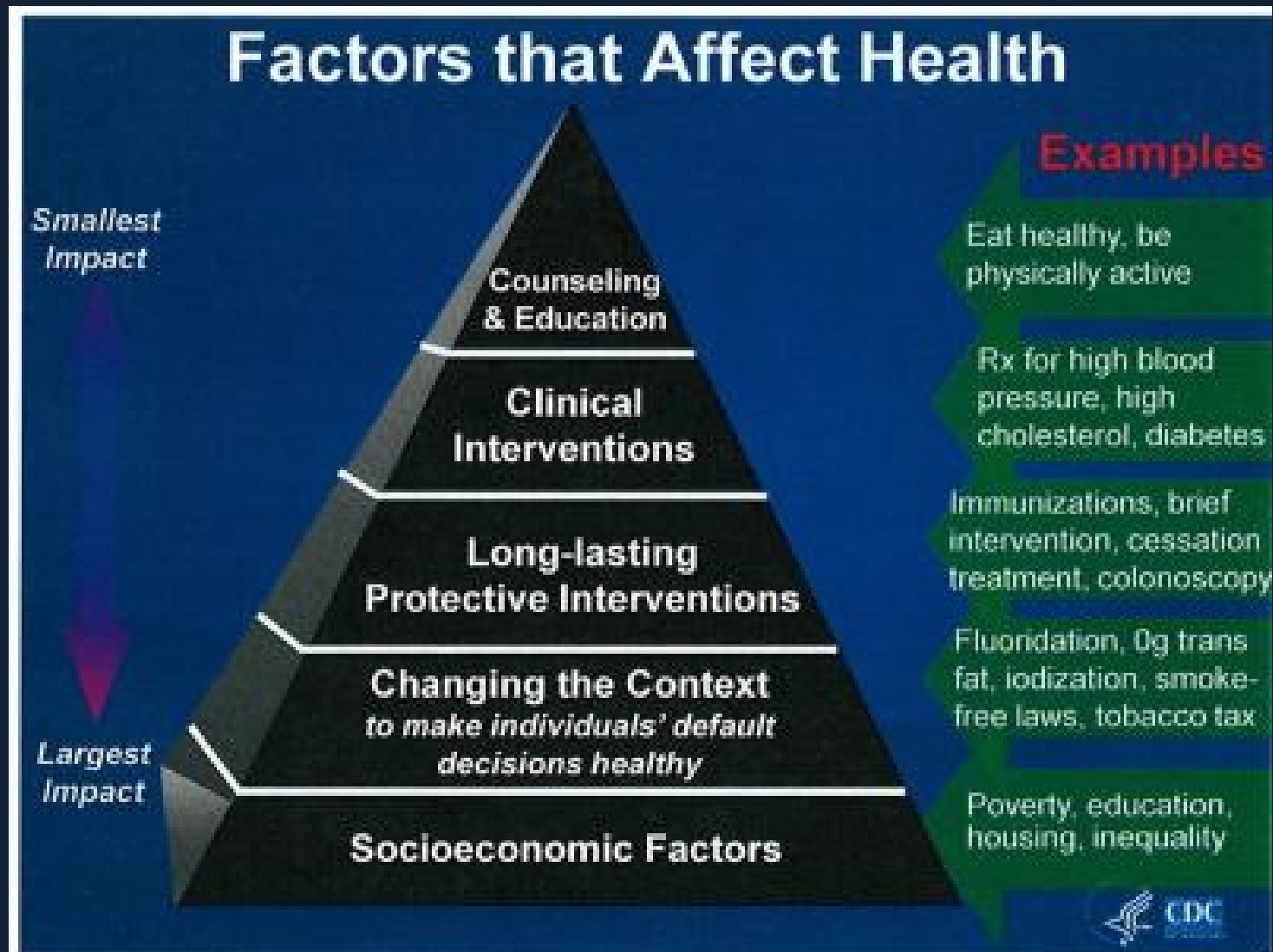
FORWARD LA: HEALTH DISPARITIES

John Moon
Federal Reserve Bank of San Francisco

April 27, 2017

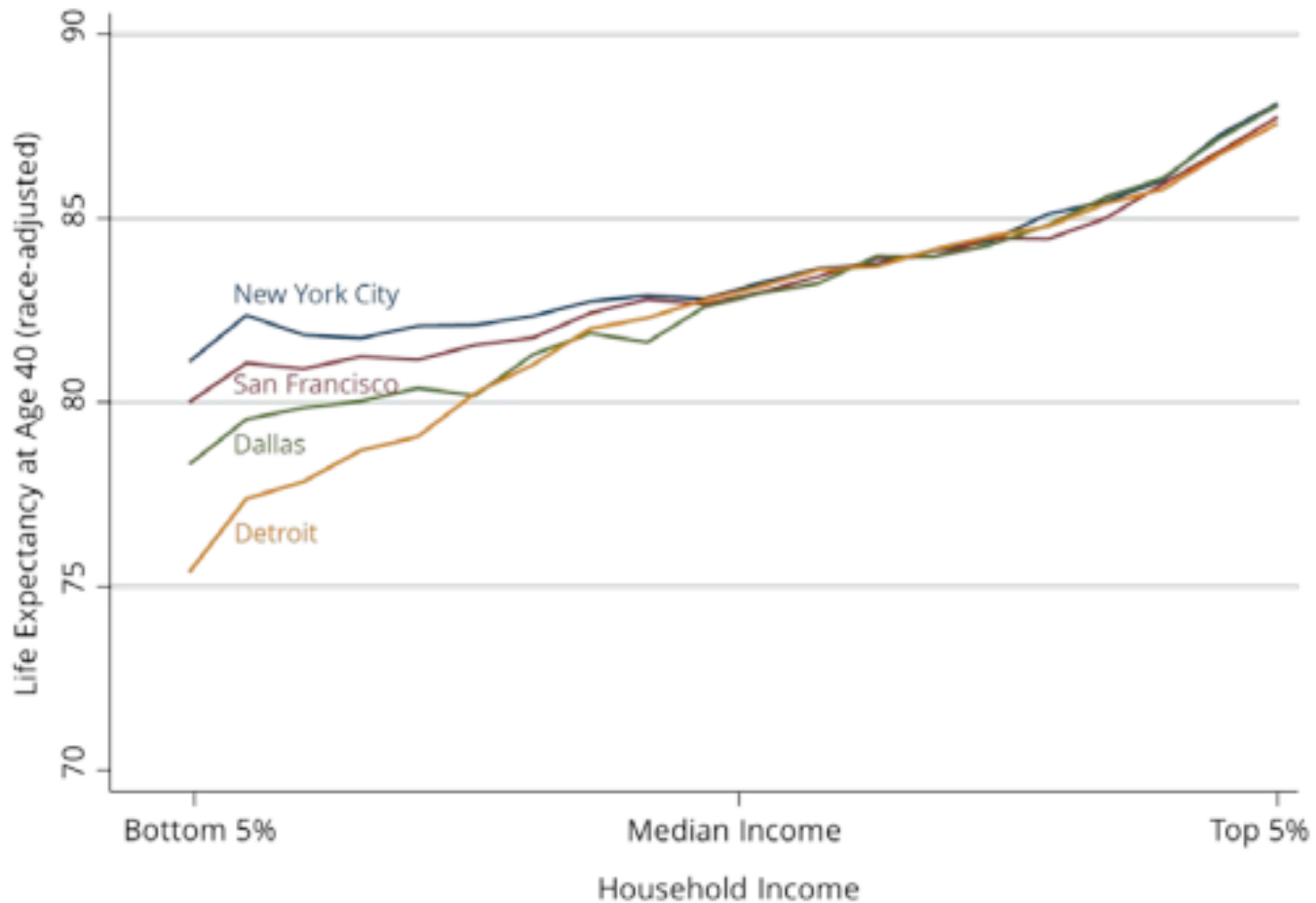
USC Sol Price Center for Social Innovation

WHAT AFFECTS HEALTH THE MOST



INCOME INEQUALITY AND HEALTH

Figure 2: Local Life Expectancies by Income

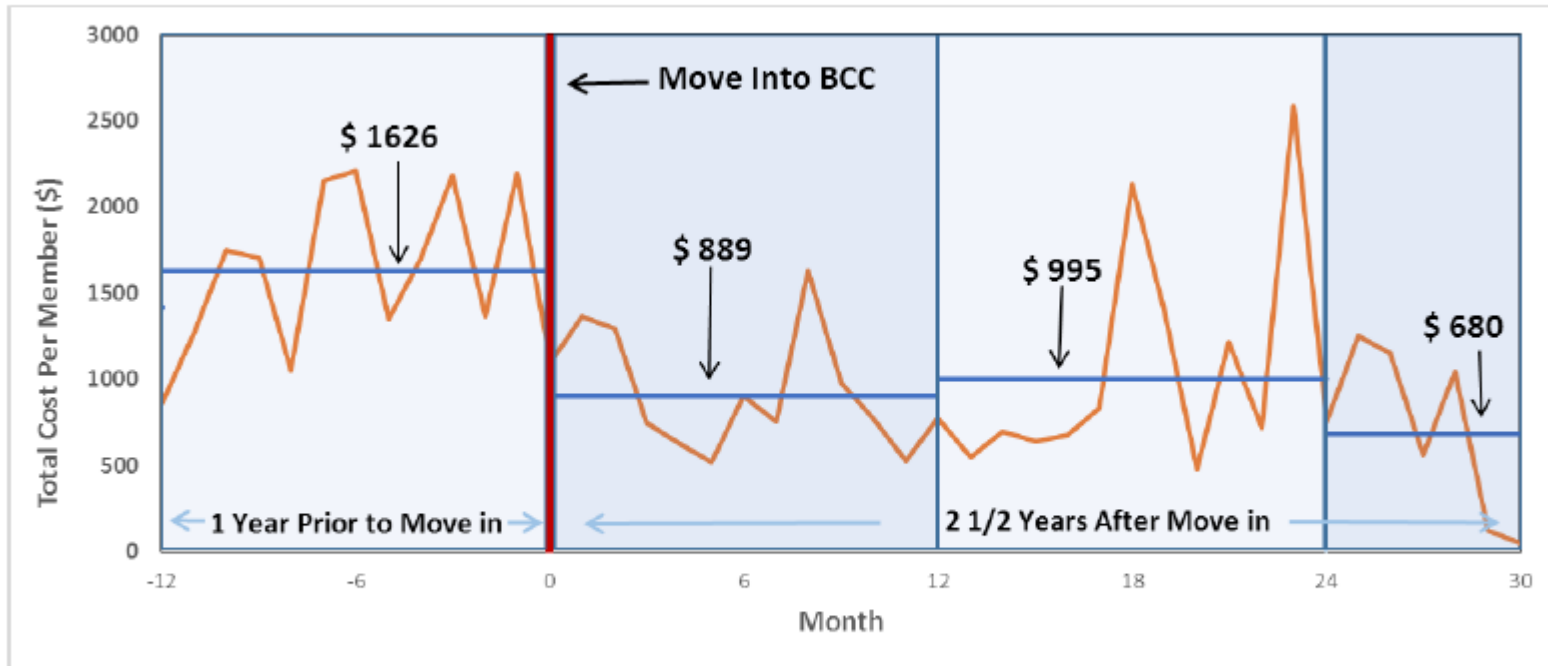


PLACE, HEALTH, TRANSIT, CLIMATE, RACE/EQUITY

- Displacement Impacts: Proximity to jobs, quality housing, household financial well-being
 - Built Environment: safety, social cohesion, physical activity
 - Self/community Agency: Toxic stress, financial independence
 - Climate: Reduce GHGs, Air pollution (asthma, pre-term births), extreme weather, water/food systems
-

BUD CLARK COMMONS – PORTLAND, OR

Exhibit 2. Total Costs Per Member Month (PMPM) Before and After Moving in to BCC



NOTES: The orange line represents actual total costs per member per month. The blue line (and associated numbers) represents the average (mean) cost for each indicated time period (one-year increments). The red line indicates the date each individual moved into BCC.